

Assessment & APR Quarterly

A publication from the UNM
Office of Assessment & Academic Program Review



February 2025

THANK YOU ACADEMIC PROGRAMS FOR YOUR AY 23-24 ASSESSMENT WORK

Assessment plans and reports were due January 31st. Many submitted early while others are still arriving daily. A warm hearted thank you especially goes to our CARC Chairs as we finalize this year's assessment cycle!



Have a LOVE/HATE relationship with assessment?

Framing it and approaching it as an INVESTMENT can make it better!

It is an investment in your:

- Students
- Professional Development
- Curriculum
- Community
- Academic Program Reviews
- Strategic Planning
- Accreditation

It is your willingness to:

- **Problem solve** in creative & collaborative ways
- **Continuously** engage and reflect
- **Prioritize** resources and initiatives for student success
- **Focus** on nurturing vs. "fixing"
- **Embrace** incremental change over time

Your assessment of student learning communicates:

- The reinforcement of your vision
- Your student stories
- Your program narrative
- The wins
- The charting of your curriculum forward



THE PERFECT MATCH: A CHARMING VISUAL & HANDY TOOL ALL-IN-ONE?

Attend our Curriculum Map Workshop on Friday, March 7th at 10am via Zoom!

The OAAPR has collaborated with the College of Arts & Sciences and the Anderson School of Management to share and discuss how UNM degree programs use curriculum maps to inform accreditation, APRs, assessment, strategic planning, and curricular development. Participants will learn about guidelines and good practice for creating, using, and reflecting on curriculum maps. We hope to create an understanding of the high value that these visual tools can bring to varying levels of programming. From advising and student touchpoints to degree outcomes and departmental planning to institutional goals, curriculum mapping is a vital assessment of relationships to assist in the alignment of student and programmatic success.

[Find registration information on the OAAPR website.](#)

The OAAPR L♥VES your GE artifact submissions!

Here are helpful reminders for this semester:

- ♥ UNM is assessing Quantitative Reasoning, Personal & Social Responsibility, Communication and Information & Digital Literacy this current academic year.
- ♥ You can submit any summer, fall, or spring student completed artifacts to the OAAPR by May 15th, 2025 at any time. The submission link is [open!](#)
- ♥ Review the essential skills rubrics, examine your current assignments and their descriptions/expectations AND align the rubric definitions with your assignment. These are all dependent on essential skill ratings and student performance.
- ♥ Communicate to students that assessment is taking place. Students can be motivated to do better on assignments when they understand both the course purpose and the institutional purpose.

TEACHING CONFERENCE

== SPRING 2025 ==



SAVE THE DATE

Schedule an appointment

Questions about incorporating assessment into your program, course, or your upcoming APR? Come talk to us!

Assessment

assessment@unm.edu

Julie Sanchez

jreed@unm.edu

Director, Assessment & APR

Academic Program Reviews

apr@unm.edu

Amanda DiMercurio

adimercurio@unm.edu

Elizabeth Kerl

eckerl@unm.edu

Data Support



Visit our [website](#) for more.

Treat yourself to a trip to one of these fabulous locations!

NMHear: Albuquerque, NM (February 27 & 28)

Higher Learning Conference 2025: Chicago, IL (April 5 & 8)

Tech Days (Data Track): UNM Campus! (April 17-18)

2025 AERA Annual Meeting: Denver, CO (April 23-27)

Association for the Assessment of Learning in Higher Education: Alexandria, VA (May 27-30)

AHE Network: Manchester, UK (June 19-20)

NASPA Conferences on Student Success in Higher Education - Assessment Track: Denver, CO (June 27-30)

IUPUI: Assessment Institute in Indianapolis: Indianapolis, IN (October 26-28)

Evaluation 25: Engaging Community, Sharing Leadership: Kansas City, MO (November 10-15)

Data Den

by Elizabeth Kerl

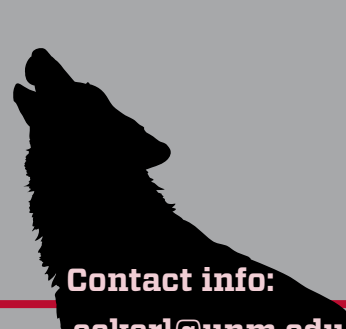
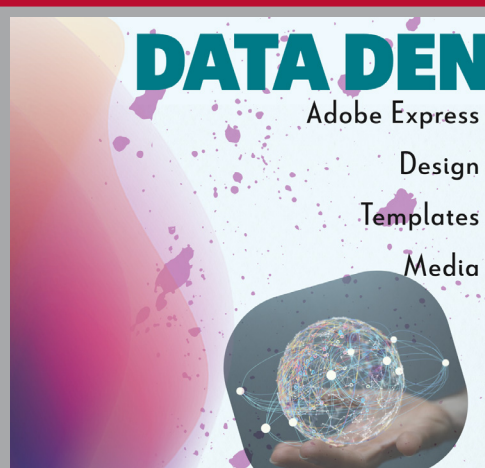
I want to introduce you to my greatest work love!

I've been spending far too much time in Adobe Express and I'm surprised with how many people don't realize this tool comes with our Adobe Creative Cloud license. For those who have used Canva, Express is really similar.

I started out simply tired with templates in PowerPoint and looked at Express. Now I go there first, because if I can't find a template I like, I can make one through layering the elements I want. In the end PowerPoint does have the better interface for running a presentation, but that is not a difficulty. I can export the slides as PNG images and add each to a PowerPoint slide. If I want editable text, I can layer content boxes over my new template. It's a very mixed media approach that I find gives me the best of both worlds.

Some of my favorite tools are:

- Templates that aren't just the same old PowerPoint!
- Fun new fonts.
- Layer images with or without text
- Remove backgrounds from existing images.
- Adaptable text templates for creative layouts.
- Create infographics of any size using a wide variety of icons and stock images.



Contact info:
eckerl@unm.edu

Contact & Website Information:

assessment@unm.edu assessment.unm.edu

apr@unm.edu apr.unm.edu