

# Assessment & APR Quarterly

A publication from the UNM

Office of Assessment & Academic Program Review

November 2025

## Curriculum Mapping Institute

The Office of Assessment & Academic Program Review (OAAPR), in collaboration with Center for Teaching and Learning (CTL), invites faculty and academic leaders to participate in a hands-on, two-day Curriculum Mapping Institute focused on a single degree program. This half-day workshop series offers a guided, practical approach to designing a curriculum map that aligns learning outcomes, course sequencing, and program goals with institutional priorities and accreditation standards.

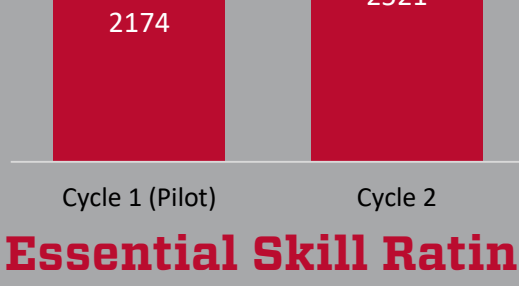
Participants will work directly with OAAPR experts to create a comprehensive curriculum map that supports strategic planning, simplifies assessment, and enhances program coherence. Whether preparing for an APR, refining advising tools, or identifying gaps and strengths in your curriculum, this institute provides the tools and templates to turn data into actionable insights. Faculty will leave with a completed map, ready to inform future curriculum development and departmental planning.

Sign up today and help shape the future of academic excellence at UNM. Contact us at [assess@unm.edu](mailto:assess@unm.edu).

## Thank you, UNM GE instructors!

A total of 4,695 artifacts were submitted for GE (General Education) assessment by GE instructors across two cycles, from 2019 to 2025, representing seven colleges and schools and all four branches. The following graph provides the distribution of artifact submissions for each 3-year cycle (Cycle<sub>1</sub>:2019-2021, Cycle<sub>2</sub>: 2022-2025), showing an increase in GE assessment engagement in 2022-2025.

Artifacts Submissions by Cycle



## NMHED Essential Skill Ratings at UNM

In 2019, NMHED defined five essential skills for all NM postsecondary programs to deliver and assess in GE certified courses: Communication, Critical Thinking, Information & Digital Literacy, Personal & Social Responsibility, and Quantitative Reasoning.

The Office of Assessment & APR oversees the analysis of GE student artifacts submitted by GE instructors. Each artifact is rated using essential skill rubrics developed by the NMHED. Ratings follow a 0-3 rubric scale to evaluate skill development: 0: no evidence, 1: Emerging. 2: Developing. 3: Proficient.

Essential Skill Cumulative Ratings Across Cycle 1 (Pilot) and Cycle 2



Quantitative Reasoning (QR), Communication (Comm), and Critical Thinking (CT) demonstrate the highest ratings, with average scores at or nearing the Developing benchmark. In contrast, Personal and Social Responsibility (PSR) and Information & Digital Literacy (IDL) skills scored lower, with average ratings at the Emerging benchmark.

## UNM's State of GE Report AY 2019-2025

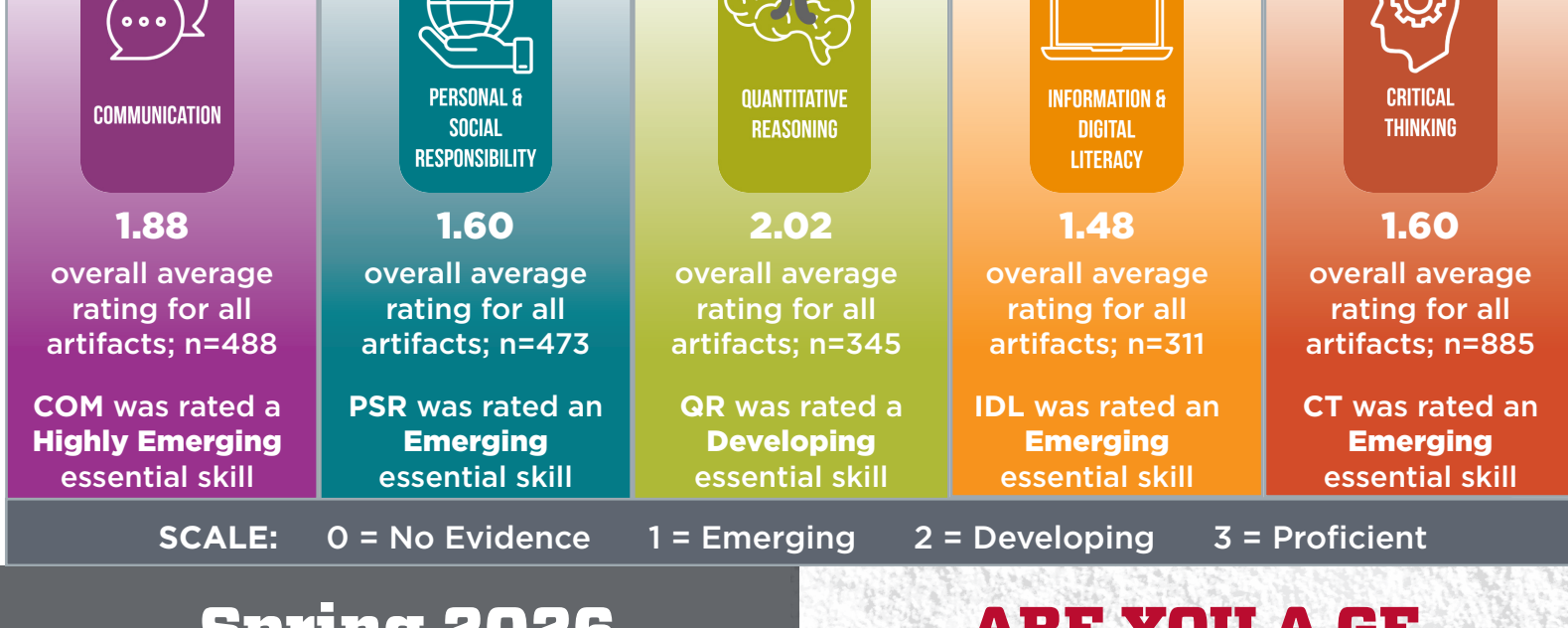
You can find additional results, takeaways, and next steps about the following topics in our institutional report (*coming soon*):

- 1000- and 2000- level GE courses
- Student demographics
- UNM Content Areas
- Dimensions of Essential Skills
- Alignment of assignment language with rubric definitions

## UNM's GE COLLEGE/SCHOOL/BRANCH INDIVIDUAL REPORTS

All entities at UNM who participate in the GE artifact submission process for the NMHED essential skills, receive annual customized reports that break down institutional data by college, school and branch. Please contact your assessment leader to access and review your individual report! CARC and curriculum committees will be discussing these in future meetings.

## Overall Cycle<sub>2</sub> (2022-2025) NMHED Essential Skills Rating



SCALE: 0 = No Evidence 1 = Emerging 2 = Developing 3 = Proficient

## Spring 2026 Workshops

### Essential Skills & Rubrics: Your Resource for Gen Ed Success

Monday, February 17th 10-11am

Join CTL and special guests from the UNM Office of Assessment to get the inside scoop on essential skills and rubrics that you can use and adapt for your General Education courses. The workshop will introduce you to the rubrics, give you strategies for adapting them for an assignment or activity, and help you incorporate metacognitive strategies within your course to help students be able to articulate the transferable skills they are learning. ([ctl.unm.edu](http://ctl.unm.edu))

### Feedback that Counts: Designing and Implementing a Mid-Semester Survey

Monday, February 25th 1-2pm

This workshop includes a brief introduction of theoretical rationale of a mid-semester survey and tools that instructors can use. Participants will also have an opportunity to design questions for the mid-semester check-in in their classes to increase students' motivation, autonomy, and academic success. ([ctl.unm.edu](http://ctl.unm.edu))

See the complete workshop list coming in January...

Find registration information on the [OAAPR website](http://OAAPR.unm.edu)

## ARE YOU A GE INSTRUCTOR?

### This workshop series is for YOU!

#### UNM's Essential Skill Days

Join OAAPR in a series of workshops for GE instructors to embed GE essential skills into their general education courses. We will have expert faculty, examples, rubric dimension applications, and ways for students to evidence their skill growth. Please attend the essential skill workshop(s) that apply to your UNM GE content area.

#### Mon, Jan 12th:

Communication 9-10am

Info & Digital Literacy 10-11am

#### Tues, Jan 13th:

Quantitative Reasoning 9-10am

Personal & Social Responsibility 10-11am

#### Wed, Jan 14th:

Critical Thinking 9-10:30am

(CT applies to all UNM content areas)

[Register on our website](#)

Sign up today and help shape the future of academic excellence at UNM.

## The Art & Science of Data: From Numbers to Narratives

### Thank You Attendees and Presenters!

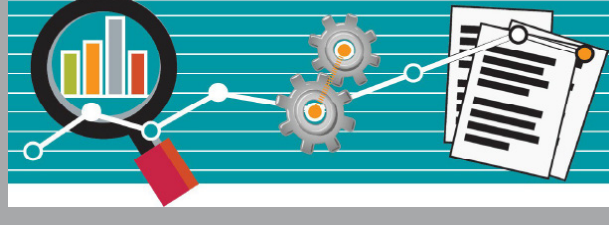
Thank you to everyone who joined us for Data Day in October. The event could not have been a success without you!

It was a great two days of discussion and connection with data users from across campus and our wider community. We had a total of 160 registrants between the two days, with most people attending online, and about 30 people in-person on day two. A special thanks to our keynote speakers and events: Our Vice President for Research Ellen Fisher opened the in-person day with a nice dive into research on campus. Battle of the Boards with Jenny Reinick & Trevor Bowes demonstrated the strengths and weaknesses of Tableau & Power BI dashboards in their fast fun competition. And our opening speaker, Phillip Phillips encouraged everyone to work toward a culture of data providers as speaker partners instead of short-order cooking up reports.

In the post-event survey, attendees said they appreciated the virtual format. The post-event survey revealed that:

- 87.3% agreed or strongly agreed that participating in this event improved their understanding of how to use data in their work.
- 83% agreed or strongly agreed that participating in this event increased their ability to engage with data.
- 91.5% agreed or strongly agreed that participating in this event increased their ability to communicate about data.
- 85.1% agreed or strongly agreed that participating in this event increased their ability to use data to inform decisions.

If you missed anything, find recordings and session materials at [dataday.unm.edu](http://dataday.unm.edu).



### Schedule an appointment

Questions about incorporating assessment into your program, course, or your upcoming APR? Come talk to us!

#### Assessment

[assess@unm.edu](mailto:assess@unm.edu)

Eva Rodriguez-Gonzalez

[evarg@unm.edu](mailto:evarg@unm.edu)

Special Faculty Advisor

#### Academic Program Reviews

[apr@unm.edu](mailto:apr@unm.edu)

Amanda DiMercurio

APR Manager

Elizabeth Kerl

[eckerl@unm.edu](mailto:eckerl@unm.edu)

Data Support



Laine Vasquez

[lainevasquez@unm.edu](mailto:lainevasquez@unm.edu)

Assessment Assistant

Julie Sanchez

[jreed@unm.edu](mailto:jreed@unm.edu)

Director, Assessment & APR

Visit our [website](http://website) for more.

## Welcome Laine Vasquez to OAAPR

Laine Vásquez is excited to start her position as Assessment Assistant to the Director with UNM's Office of Assessment. Laine has taken the opportunity to learn skills in a variety of spaces since earning her Master's degree in 2020, including: pollinating and studying corn in a greenhouse, working as an instructor for summer courses at a science museum and a zoo in Oregon, knowledge matching executives to experts who can solve their analytics problems, and most recently teaching GED classes! With this mixed background, Laine hopes to contribute a new perspective to think about current practices and to ask new questions.



## Data Den

by Elizabeth Kerl

Bring your skills and learn new ones with the UNM Data Community.

Ways to Connect:

- Join the Teams Group
- Join the Monthly Meeting \*email to be added
- Join the List-Serv - see below

Are you looking for data? Do you have questions about the data you use? Are you new to data and want to explore methods and skills with others?

The Enterprise Data Community is bringing people together who work with data. Any kind of data, any kind of work. Everyone works more effectively when we know each other, what we work on, important changes to institutional datasets, or just have others to bounce ideas off of. Every month someone from the community shares a skill for others to learn, demos for Power BI, Python, and R/SQL.

### HOW TO SUBSCRIBE TO THE LIST

Individuals can subscribe to the list by sending a message to:

[listserv@list.unm.edu](mailto:listserv@list.unm.edu)

Leave the Subject field blank.

In the body of message type (with no other text):

subscribe EDC-L Firstname Lastname

Once the subscribe request is approved, a notification will be emailed to the person.

### HOW TO UNSUBSCRIBE FROM THE LIST

Subscribers can remove themselves from the list by sending a message to:

[listserv@list.unm.edu](mailto:listserv@list.unm.edu)

Leave the Subject field blank.

In the body of message type (with no other text):

unsubscribe EDC-L

### Contact & Website Information:

[assess@unm.edu](mailto:assess@unm.edu)

[assessment.unm.edu](http://assessment.unm.edu)

[apr@unm.edu](mailto:apr@unm.edu)

[apr.unm.edu](http://apr.unm.edu)

Contact info:

[eckerl@unm.edu](mailto:eckerl@unm.edu)

