



Assessment & APR Quarterly

A publication from the UNM Office of Assessment & Academic Program Review

April 2022



Academic Unit Assessment

Thank you to all of the colleges, schools, and branches that submitted assessment documents to the OA/APR! These submissions are the basis of our feedback cycle (see below).

UNDERGRADUATE GRAND TOTAL

(excluding Taos)

Programs	149	
Program Degrees Submitted	164	56.7%
	93	

MAIN CAMPUS

Programs	89	
Program Degrees Submitted	101	65.3%
	66	

BRANCH CAMPUSES (excluding Taos)

Programs	60	
Program Degrees Submitted	63	42.9%
	27	

GRADUATE GRAND TOTAL

Programs	98	
Program Degrees Submitted	145	57.2%
	83	

OVERALL GRAND TOTAL

Programs	247	
Program Degrees Submitted	309	57.0%
	176	

Assessment Submission Deadlines:

GE Artifact Submissions: May 15th

The final deadline for GE artifact submission is May 15th, 2022. For those that are not waiting for any more materials/artifacts, please submit at your earliest convenience using [this link](#).

This year's Essential Skills:

- Communication
- Personal & Social Responsibility
- Quantitative Reasoning
- Information & Digital Literacy

NO CRITICAL THINKING artifacts should be submitted. All submissions should be tied to **two dimensions** - see our GE Assessment pages [here](#) for further info. Please reach out to your assessment leader if you have questions.

Co-Curricular Units: June 30

Co-curricular plans/reports are due on June 30th. If you turned in a plan last year your report is due. If you are new to assessment, your plan is due.

You can find help with **completing your assessment plan and report** on our [website](#). If you need to **upload your file** to our repository, use [this link](#). This [helpful guide](#) will walk you **step-by-step through the process**. please reach out via assess@unm.edu for additional support.

AY 20-21 Assessment Results

The OA/APR receives state of assessment narratives from each college, school and branch; these narratives are reviewed with qualitative analysis software. Here are the themes and patterns that emerged from the 20-21 assessment cycle!

How are programs defining strong assessment?

Measurable outcomes, SLOs aligned with vision & mission, high participation in assessment reporting, greater faculty engagement with the assessment process beyond sole compliance, students meeting or exceeding set assessment program benchmarks, faculty using assessment data to inform curricular changes, and revision and reflection.

How are programs planning to address areas of assessment they want to strengthen?

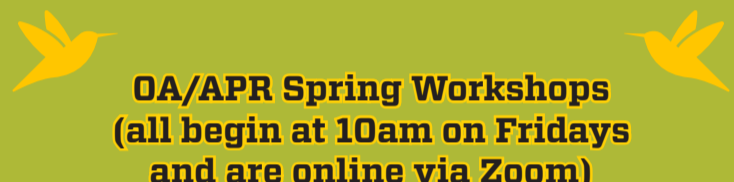
Consistently communicate with faculty to improve assessment engagement, utilize faculty talks/retreats/meetings to discuss assessment regularly, integrate curriculum and assessment committees, be more thoughtful/intentional with assessment analysis, employ new leadership to actively participate in the assessment process, explore new assessment options when staff/leadership are changing, integrate accrediting body assessment methods, modify capstone projects, and renew assessment plans.

What are programs doing with their assessment results?

Programs are consistently using assessment results for program and assessment changes! Academic units are adding courses, changing SLOs to be more targeted, revising curriculum, connecting assessment and curriculum committees, using accrediting bodies to inform assessment practices, conducting full reviews of degrees, updating assessment plans, adding formative assessments, sharpening alignment between outcomes and measures, and changing assessment to meet the needs of specific student populations (graduate level, exiting seniors, etc).

Drop-In Hours!

We're available for individual or group consultations every Friday morning at 9am via Zoom. Drop in to discuss assessment, APR, data, or strategic planning topics by using this [Zoom link](#).



OA/APR Spring Workshops (all begin at 10am on Fridays and are online via Zoom)

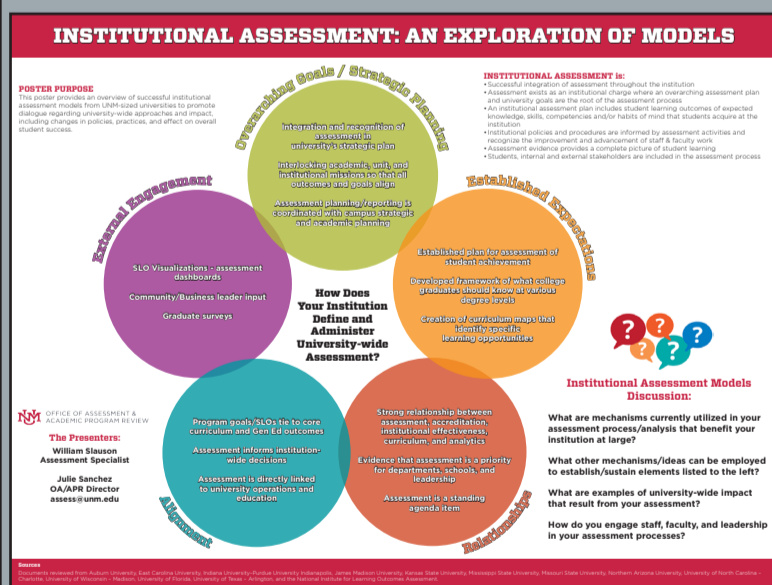
Please use [this](#) registration link for session details and to sign up for any session described below:

Data Visualization Principles	April 15
This session will cover the basics of data visualization and introduce using pivot tables to craft accessible charts/visuals.	

Fall workshops will be announced in our August newsletter. Stay tuned!

Improving Institutional Assessment

The OA/APR office is improving UNM's institutional assessment plan to align with national standards. Included in the graphic below is an overview of successful institutional assessment elements as defined by the National Institute for Learning Outcomes Assessment (NILOA) and the American Association of Colleges & Universities (AAC&U). This information was presented at the 2022 New Mexico Higher Education Assessment & Retention Conference and is being applied to UNM's new academic unit assessment analysis.



Undergoing an APR?

AO/APR recently solicited feedback from Chairs & DAs from previous APRs to share their advice to help their colleagues. Here are some practical suggestions.

Pass It Forward...

(advice from your colleagues)

Start	Start early on the Self-Study (this will take longer than 1-2 summer months)
Collaborate	Collaboration & Consistency between Self-Study & Visit
Know	Know your top priorities, don't focus on any one section too much, reflect your strengths and areas for opportunities
Prepare	Prepare for visit - have a faculty plan
Use	Use OA/APR team & previous APR as a resource

Contact Information:

assess@unm.edu assessment.unm.edu
apr@unm.edu apr.unm.edu

Newsletter Submissions:

We are accepting ideas and submissions for our next issue. Please email us at assess@unm.edu before July 30, 2022.

Noteworthy Links

The [Student Experience Project](#) (SEP) was created to tackle inequities in college success by transforming the student experience. By focusing on building community and a sense of belonging on campus, the SEP is committed to a future of higher education where all students—particularly students who face barriers entering college—feel supported to persist through academic challenges until graduation day. SEP is a collaborative of UNM's university leaders, faculty, researchers and national education organizations committed to innovative, research-based practices to increase degree attainment by building equitable learning environments and fostering a sense of belonging on campus.

Hosted by IUPUI, the [Assessment Institute](#) is the largest national educational assessment conference. Save the date for Oct. 9-11th, 2022 in Indianapolis!



The New Mexico Higher Education Assessment Association (NMHEAA) hosts a [summer retreat](#) in Ruidoso NM from June 5-8 2022. Please see [this link](#) for more information.